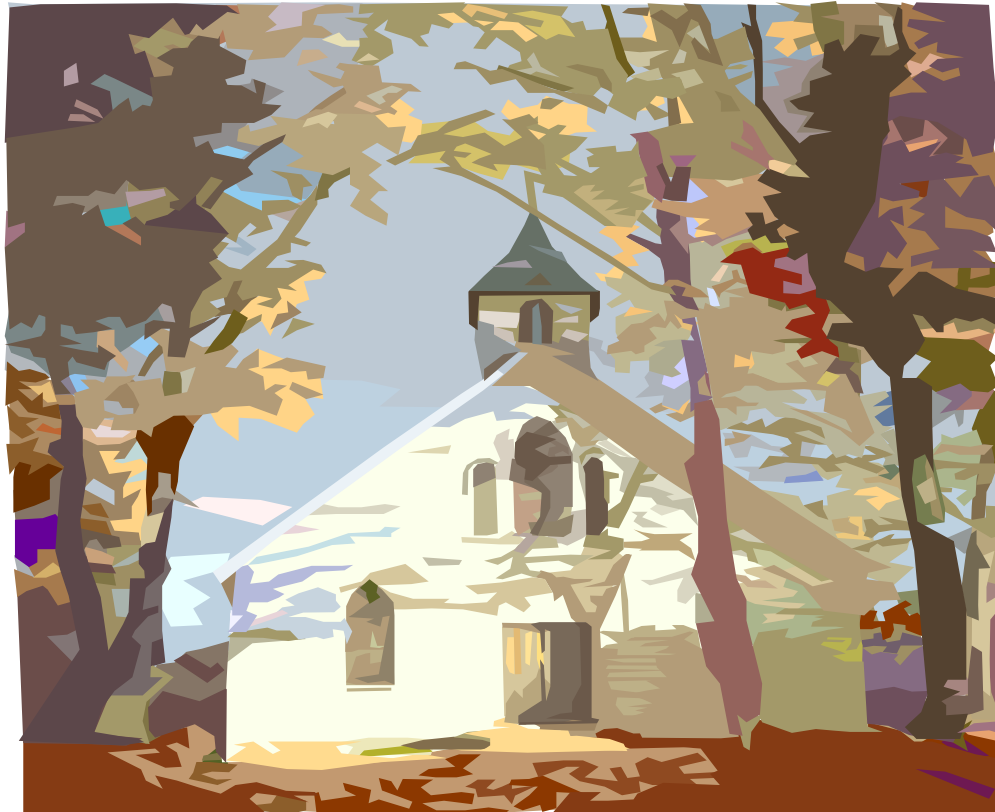


2005

North American Division

Revised Membership Comparison Report



Revised September 29, 2006

Produced by North American Division Secretariat

NAD Membership Accessions Comparison 1st Quarter 2005

Sorted by Descending Order in Column 3

(Baptisms and Profession of Faith only)

Report Date: Revised September 14, 2006

Columns 1 - 3 and 7 - 9 are relative to first quarter.

	1	2	3	4	5	6	7	8	9
	Conference Name	Begin Members	1st Qtr	2nd Qtr	3rd Qtr	4th Qtr	Total Bapt&POF	1st Qtr Tot Mbrs	Access/Mem %
1	Southeastern California Conference	64,526	564	0	0	0	564	64,890	0.87
2	Florida Conference	55,577	504	0	0	0	504	55,501	0.91
3	Ontario Conference	24,489	345	0	0	0	345	24,733	1.41
4	Southeastern Conference	31,549	318	0	0	0	318	31,913	1.01
5	South Atlantic Conference	33,891	275	0	0	0	275	34,134	0.81
6	Central California Conference	31,511	261	0	0	0	261	31,650	0.83
7	Texas Conference	37,031	246	0	0	0	246	37,149	0.66
8	Georgia-Cumberland Conference	30,213	235	0	0	0	235	30,238	0.78
9	Greater New York Conference	22,184	233	0	0	0	233	22,358	1.05
10	Potomac Conference	28,630	220	0	0	0	220	28,718	0.77
11	Northern California Conference	40,060	200	0	0	0	200	40,083	0.50
12	Southern California Conference	44,232	188	0	0	0	188	44,011	0.43
13	Allegheny East Conference	30,606	179	0	0	0	179	30,750	0.58
14	Carolina Conference	16,726	176	0	0	0	176	16,849	1.05
15	Northeastern Conference	45,763	174	0	0	0	174	45,520	0.38
16	Texico Conference	9,516	174	0	0	0	174	9,536	1.83
17	Central States Conference	10,965	171	0	0	0	171	11,123	1.56
18	Oregon Conference	32,778	145	0	0	0	145	32,834	0.44
19	Southern New England Conference	13,343	137	0	0	0	137	13,403	1.03
20	Kentucky-Tennessee Conference	12,489	126	0	0	0	126	12,584	1.01
21	Michigan Conference	24,849	114	0	0	0	114	24,829	0.46
22	Lake Region Conference	27,541	113	0	0	0	113	27,651	0.41
23	Upper Columbia Conference	23,737	112	0	0	0	112	23,701	0.47
24	South Central Conference	31,681	106	0	0	0	106	31,733	0.33
25	Rocky Mountain Conference	15,578	92	0	0	0	92	15,429	0.59
26	Washington Conference	19,254	90	0	0	0	90	19,335	0.47
27	Arizona Conference	14,501	89	0	0	0	89	14,569	0.61
28	Nevada-Utah Conference	7,008	78	0	0	0	78	6,876	1.11
29	Southwest Region Conference	20,252	75	0	0	0	75	20,336	0.37
30	British Columbia Conference	10,154	75	0	0	0	75	10,136	0.74

NAD Membership Accessions Comparison 1st Quarter 2005

Sorted by Descending Order in Column 3

(Baptisms and Profession of Faith only)

Report Date: Revised September 14, 2006

Columns 1 - 3 and 7 - 9 are relative to first quarter.

	1	2	3	4	5	6	7	8	9
	Conference Name	Begin Members	1st Qtr	2nd Qtr	3rd Qtr	4th Qtr	Total Bapt&POF	1st Qtr Tot Mbrs	Access/Mem %
31	Kansas-Nebraska Conference	11,787	66	0	0	0	66	11,843	0.56
32	Arkansas-Louisiana Conference	9,921	65	0	0	0	65	9,929	0.66
33	Pennsylvania Conference	9,860	63	0	0	0	63	9,866	0.64
34	Oklahoma Conference	6,574	62	0	0	0	62	6,593	0.94
35	Ohio Conference	11,461	61	0	0	0	61	11,462	0.53
36	Iowa-Missouri Conference	10,485	58	0	0	0	58	10,448	0.55
37	New Jersey Conference	10,920	55	0	0	0	55	10,893	0.50
38	Quebec Conference	4,634	54	0	0	0	54	4,692	1.17
39	Illinois Conference	12,593	49	0	0	0	49	12,518	0.39
40	Alberta Conference	9,009	46	0	0	0	46	9,047	0.51
41	Chesapeake Conference	11,910	44	0	0	0	44	11,952	0.37
42	Gulf States Conference	8,659	39	0	0	0	39	8,622	0.45
43	Idaho Conference	6,303	34	0	0	0	34	6,296	0.54
44	Wisconsin Conference	6,773	31	0	0	0	31	6,686	0.46
45	Minnesota Conference	6,592	27	0	0	0	27	6,595	0.41
46	Allegheny West Conference	12,290	26	0	0	0	26	12,257	0.21
47	Montana Conference	3,854	23	0	0	0	23	3,863	0.60
48	Indiana Conference	6,869	21	0	0	0	21	6,848	0.31
49	Bermuda Conference	3,733	19	0	0	0	19	3,750	0.51
50	Mountain View Conference	2,279	18	0	0	0	18	2,277	0.79
51	Hawaii Conference	5,940	17	0	0	0	17	5,828	0.29
52	New York Conference	4,936	16	0	0	0	16	4,901	0.32
53	Northern New England Conference	4,866	13	0	0	0	13	4,856	0.27
54	Alaska Conference	3,678	12	0	0	0	12	3,674	0.33
55	Manitoba-Saskatchewan Conference	3,173	10	0	0	0	10	3,172	0.32
56	Dakota Conference	4,246	10	0	0	0	10	4,221	0.24
57	Maritime Conference	1,648	9	0	0	0	9	1,617	0.55
58	SDA Church in Newfoundland/Labrador	690	2	0	0	0	2	689	0.29
	TOTALS	1,006,317	6,765	0	0	0	6,765	1,007,967	0.67

NAD Membership Accessions Comparison 2nd Quarter 2005

Sorted by Descending Order in Column 4

(Baptisms and Profession of Faith only)

Report Revised Dated September 28, 2006

Columns 1 - 4 and 7 - 9 are relevant to 2nd quarter

	1	2	3	4	5	6	7	8	9
	Conference Name	Begin Members	1st Qtr	2nd Qtr	3rd Qtr	4th Qtr	Total Bapt&POF	2nd Qtr Tot Mbrs	Access/Mem %
1	Texas Conference	37,031	246	552	0	0	798	37,422	2.15
2	Potomac Conference	28,630	220	548	0	0	768	28,842	2.68
3	Southeastern California Conference	64,526	564	516	0	0	1,080	65,375	1.67
4	Northeastern Conference	45,763	174	444	0	0	618	45,305	1.35
5	Florida Conference	55,577	504	413	0	0	917	55,789	1.65
6	Southern California Conference	44,232	188	359	0	0	547	43,968	1.24
7	Southeastern Conference	31,549	318	344	0	0	662	32,183	2.10
8	Oregon Conference	32,778	145	320	0	0	465	33,024	1.42
9	Greater New York Conference	22,184	233	317	0	0	550	22,596	2.48
10	Georgia-Cumberland Conference	30,213	235	292	0	0	527	30,437	1.74
11	Arizona Conference	14,501	89	239	0	0	328	14,762	2.26
12	Michigan Conference	24,849	114	235	0	0	349	24,927	1.40
13	Northern California Conference	40,060	200	229	0	0	429	40,077	1.07
14	Central California Conference	31,511	261	220	0	0	481	31,728	1.53
15	Carolina Conference	16,726	176	213	0	0	389	17,007	2.33
16	Allegheny East Conference	30,606	179	204	0	0	383	30,912	1.25
17	Upper Columbia Conference	23,737	112	199	0	0	311	23,850	1.31
18	Texico Conference	9,516	174	196	0	0	370	9,746	3.89
19	South Central Conference	31,681	106	184	0	0	290	31,894	0.92
20	Ontario Conference	24,489	345	180	0	0	525	24,943	2.14
21	Arkansas-Louisiana Conference	9,921	65	167	0	0	232	10,063	2.34
22	New Jersey Conference	10,920	55	163	0	0	218	11,001	2.00
23	Southern New England Conference	13,343	137	151	0	0	288	13,410	2.16
24	Southwest Region Conference	20,252	75	137	0	0	212	20,515	1.05
25	Washington Conference	19,254	90	131	0	0	221	19,374	1.15
26	Rocky Mountain Conference	15,578	92	131	0	0	223	15,449	1.43
27	Illinois Conference	12,593	49	131	0	0	180	12,586	1.43
28	Ohio Conference	11,461	61	124	0	0	185	11,413	1.61
29	Gulf States Conference	8,659	39	121	0	0	160	8,746	1.85
30	Minnesota Conference	6,592	27	121	0	0	148	6,689	2.25

NAD Membership Accessions Comparison 2nd Quarter 2005

Sorted by Descending Order in Column 4

(Baptisms and Profession of Faith only)

Report Revised Dated September 28, 2006

Columns 1 - 4 and 7 - 9 are relevant to 2nd quarter

	1	2	3	4	5	6	7	8	9
	Conference Name	Begin Members	1st Qtr	2nd Qtr	3rd Qtr	4th Qtr	Total Bapt&POF	2nd Qtr Tot Mbrs	Access/Mem %
31	South Atlantic Conference	33,891	275	113	0	0	388	34,217	1.14
32	Iowa-Missouri Conference	10,485	58	110	0	0	168	10,506	1.60
33	Allegheny West Conference	12,290	26	106	0	0	132	12,142	1.07
34	Kentucky-Tennessee Conference	12,489	126	106	0	0	232	12,671	1.86
35	Lake Region Conference	27,541	113	105	0	0	218	27,701	0.79
36	Alberta Conference	9,009	46	98	0	0	144	9,082	1.60
37	Wisconsin Conference	6,773	31	89	0	0	120	6,746	1.77
38	Chesapeake Conference	11,910	44	72	0	0	116	11,977	0.97
39	Kansas-Nebraska Conference	11,787	66	70	0	0	136	11,854	1.15
40	Pennsylvania Conference	9,860	63	69	0	0	132	9,846	1.34
41	Oklahoma Conference	6,574	62	69	0	0	131	6,579	1.99
42	Indiana Conference	6,869	21	67	0	0	88	6,871	1.28
43	Hawaii Conference	5,940	17	67	0	0	84	5,797	1.41
44	Central States Conference	10,965	171	56	0	0	227	11,079	2.07
45	British Columbia Conference	10,154	75	56	0	0	131	10,174	1.29
46	Nevada-Utah Conference	7,008	78	53	0	0	131	6,921	1.87
47	Mountain View Conference	2,279	18	42	0	0	60	2,298	2.63
48	Idaho Conference	6,303	34	39	0	0	73	6,310	1.16
49	Quebec Conference	4,634	54	38	0	0	92	4,730	1.99
50	Northern New England Conference	4,866	13	30	0	0	43	4,841	0.88
51	Manitoba-Saskatchewan Conference	3,173	10	30	0	0	40	3,180	1.26
52	Bermuda Conference	3,733	19	21	0	0	40	3,771	1.07
53	Dakota Conference	4,246	10	19	0	0	29	4,232	0.68
54	New York Conference	4,936	16	16	0	0	32	4,862	0.65
55	Alaska Conference	3,678	12	9	0	0	21	3,673	0.57
56	Maritime Conference	1,648	9	6	0	0	15	1,584	0.91
57	Montana Conference	3,854	23	3	0	0	26	3,871	0.67
58	SDA Church in Newfld/Lab	690	2	0	0	0	2	690	0.29
	TOTALS	1,006,317	6,765	9,140	0	0	15,905	1,012,238	1.58

NAD Membership Accessions Comparison 3rd Quarter 2005

Sorted by Descending Order in Column 5

(Baptisms and Profession of Faith only)

REPORT DATE: Revised September 14, 2006

Columns 1 - 5 and 7 - 9 are relative to third quarter.

	1	2	3	4	5	6	7	8	9
	Conference Name	Begin Members	1st Qtr	2nd Qtr	3rd Qtr	4th Qtr	Total Bapt&POF	3rd Qtr Tot Mbrs	Access/Mem %
1	Florida Conference	55,577	504	413	526	0	1,443	56,076	2.60
2	Texas Conference	37,031	246	552	500	0	1,298	37,828	3.51
3	Southeastern California Conference	64,526	564	516	465	0	1,545	65,806	2.39
4	Southern California Conference	44,232	188	359	450	0	997	43,832	2.25
5	Southwest Region Conference	20,252	75	137	405	0	617	20,878	3.05
6	Northeastern Conference	45,763	174	444	399	0	1,017	45,613	2.22
7	Greater New York Conference	22,184	233	317	373	0	923	22,864	4.16
8	Southeastern Conference	31,549	318	344	360	0	1,022	32,493	3.24
9	Potomac Conference	28,630	220	548	335	0	1,103	29,141	3.85
10	Arizona Conference	14,501	89	239	331	0	659	14,994	4.54
11	Georgia-Cumberland Conference	30,213	235	292	297	0	824	30,649	2.73
12	Carolina Conference	16,726	176	213	244	0	633	17,262	3.78
13	Ontario Conference	24,489	345	180	240	0	765	25,159	3.12
14	Gulf States Conference	8,659	39	121	232	0	392	8,912	4.53
15	Northern California Conference	40,060	200	229	208	0	637	40,175	1.59
16	New Jersey Conference	10,920	55	163	197	0	415	11,156	3.80
17	Central California Conference	31,511	261	220	196	0	677	31,650	2.15
18	Allegheny East Conference	30,606	179	204	195	0	578	31,065	1.89
19	South Central Conference	31,681	106	184	192	0	482	32,073	1.52
20	Nevada-Utah Conference	7,008	78	53	190	0	321	7,097	4.58
21	Michigan Conference	24,849	114	235	164	0	513	24,984	2.06
22	South Atlantic Conference	33,891	275	113	163	0	551	34,339	1.63
23	Oregon Conference	32,778	145	320	159	0	624	33,218	1.90
24	Southern New England Conference	13,343	137	151	148	0	436	13,530	3.27
25	Texico Conference	9,516	174	196	121	0	491	9,832	5.16
26	Washington Conference	19,254	90	131	116	0	337	19,450	1.75
27	Chesapeake Conference	11,910	44	72	111	0	227	12,070	1.91
28	Pennsylvania Conference	9,860	63	69	109	0	241	9,895	2.44
29	Upper Columbia Conference	23,737	112	199	104	0	415	23,908	1.75
30	Central States Conference	10,965	171	56	104	0	331	11,168	3.02

NAD Membership Accessions Comparison 3rd Quarter 2005

Sorted by Descending Order in Column 5
(Baptisms and Profession of Faith only)

REPORT DATE: Revised September 14, 2006

Columns 1 - 5 and 7 - 9 are relative to third quarter.

	1	2	3	4	5	6	7	8	9
	Conference Name	Begin Members	1st Qtr	2nd Qtr	3rd Qtr	4th Qtr	Total Bapt&POF	3rd Qtr Tot Mbrs	Access/Mem %
31	Kentucky-Tennessee Conference	12,489	126	106	101	0	333	12,762	2.67
32	Lake Region Conference	27,541	113	105	100	0	318	27,976	1.15
33	Ohio Conference	11,461	61	124	97	0	282	11,473	2.46
34	Illinois Conference	12,593	49	131	96	0	276	12,565	2.19
35	Alberta Conference	9,009	46	98	80	0	224	9,143	2.49
36	Rocky Mountain Conference	15,578	92	131	75	0	298	15,501	1.91
37	Minnesota Conference	6,592	27	121	74	0	222	6,743	3.37
38	Iowa-Missouri Conference	10,485	58	110	71	0	239	10,532	2.28
39	British Columbia Conference	10,154	75	56	67	0	198	10,206	1.95
40	Oklahoma Conference	6,574	62	69	66	0	197	6,619	3.00
41	New York Conference	4,936	16	16	62	0	94	4,920	1.90
42	Northern New England Conference	4,866	13	30	60	0	103	4,856	2.12
43	Arkansas-Louisiana Conference	9,921	65	167	59	0	291	10,093	2.93
44	Kansas-Nebraska Conference	11,787	66	70	49	0	185	11,658	1.57
45	Quebec Conference	4,634	54	38	40	0	132	4,760	2.85
46	Mountain View Conference	2,279	18	42	40	0	100	2,333	4.39
47	Allegheny West Conference	12,290	26	106	39	0	171	12,127	1.39
48	Wisconsin Conference	6,773	31	89	38	0	158	6,722	2.33
49	Idaho Conference	6,303	34	39	38	0	111	6,326	1.76
50	Indiana Conference	6,869	21	67	36	0	124	6,891	1.81
51	Alaska Conference	3,678	12	9	27	0	48	3,689	1.31
52	Hawaii Conference	5,940	17	67	12	0	96	5,771	1.62
53	SDA Church in Newfoundland/Labrador	690	2	0	11	0	13	696	1.88
54	Montana Conference	3,854	23	3	10	0	36	3,861	0.93
55	Dakota Conference	4,246	10	19	9	0	38	4,239	0.89
56	Maritime Conference	1,648	9	6	7	0	22	1,581	1.33
57	Bermuda Conference	3,733	19	21	4	0	44	3,778	1.18
58	Manitoba-Saskatchewan Conference	3,173	10	30	3	0	43	3,181	1.36
	TOTALS	1,006,317	6,765	9,140	9,005	0	24,910	1,018,119	2.48

NAD Membership Accessions Comparison for 4th Quarter 2005

Sorted by Descending Order in Column 6
(Baptisms and Profession of Faith only)

Report Date: REVISED September 14, 2006

All columns are relative to fourth quarter or Annual Membership Statistics

	1	2	3	4	5	6	7	8	9
	Conference Name	Begin Members	1st Qtr	2nd Qtr	3rd Qtr	4th Qtr	Total Bapt&POF	Yr End Mem	Access/Mem %
1	Texas Conference	37,031	246	552	500	718	2,016	38,143	5.44
2	Potomac Conference	28,630	220	548	335	578	1,681	29,647	5.87
3	Southern California Conference	44,232	188	359	450	548	1,545	43,716	3.49
4	Central California Conference	31,511	261	220	196	540	1,217	31,992	3.86
5	Southeastern California Conference	64,526	564	516	465	522	2,067	65,691	3.20
6	Georgia-Cumberland Conference	30,213	235	292	297	517	1,341	30,984	4.44
7	Greater New York Conference	22,184	233	317	373	512	1,435	23,145	6.47
8	Florida Conference	55,577	504	413	526	464	1,907	55,938	3.43
9	Southeastern Conference	31,549	318	344	360	420	1,442	32,918	4.57
10	Northeastern Conference	45,763	174	444	399	363	1,380	44,898	3.02
11	South Atlantic Conference	33,891	275	113	163	345	896	34,671	2.64
12	Ontario Conference	24,489	345	180	240	342	1,107	25,559	4.52
13	Southern New England Conference	13,343	137	151	148	341	777	13,839	5.82
14	Southwest Region Conference	20,252	75	137	405	296	913	21,178	4.51
15	Michigan Conference	24,849	114	235	164	287	800	25,116	3.22
16	Oregon Conference	32,778	145	320	159	276	900	33,479	2.75
17	Washington Conference	19,254	90	131	116	266	603	19,683	3.13
18	Northern California Conference	40,060	200	229	208	252	889	40,244	2.22
19	Central States Conference	10,965	171	56	104	229	560	11,388	5.11
20	Allegheny East Conference	30,606	179	204	195	212	790	31,210	2.58
21	Gulf States Conference	8,659	39	121	232	200	592	9,075	6.84
22	Lake Region Conference	27,541	113	105	100	191	509	28,041	1.85
23	Arizona Conference	14,501	89	239	331	189	848	15,129	5.85
24	Carolina Conference	16,726	176	213	244	180	813	17,424	4.86
25	Chesapeake Conference	11,910	44	72	111	173	400	12,237	3.36
26	New Jersey Conference	10,920	55	163	197	167	582	11,314	5.33
27	Pennsylvania Conference	9,860	63	69	109	166	407	10,028	4.13
28	Upper Columbia Conference	23,737	112	199	104	160	575	24,019	2.42
29	Texico Conference	9,516	174	196	121	157	648	9,964	6.81
30	Oklahoma Conference	6,574	62	69	66	143	340	6,726	5.17

NAD Membership Accessions Comparison for 4th Quarter 2005

Sorted by Descending Order in Column 6

(Baptisms and Profession of Faith only)

Report Date: REVISED September 14, 2006

All columns are relative to fourth quarter or Annual Membership Statistics

	1	2	3	4	5	6	7	8	9
	Conference Name	Begin Members	1st Qtr	2nd Qtr	3rd Qtr	4th Qtr	Total Bapt&POF	Yr End Mem	Access/Mem %
31	Arkansas-Louisiana Conference	9,921	65	167	59	135	426	10,186	4.29
32	Rocky Mountain Conference	15,578	92	131	75	124	422	15,572	2.71
33	Illinois Conference	12,593	49	131	96	124	400	12,645	3.18
34	South Central Conference	31,681	106	184	192	122	604	32,187	1.91
35	Alberta Conference	9,009	46	98	80	115	339	9,233	3.76
36	Ohio Conference	11,461	61	124	97	114	396	11,475	3.46
37	Minnesota Conference	6,592	27	121	74	111	333	6,832	5.05
38	Allegheny West Conference	12,290	26	106	39	109	280	12,198	2.28
39	Indiana Conference	6,869	21	67	36	98	222	6,972	3.23
40	Quebec Conference	4,634	54	38	40	96	228	4,897	4.92
41	Iowa-Missouri Conference	10,485	58	110	71	85	324	10,537	3.09
42	Nevada-Utah Conference	7,008	78	53	190	85	406	7,160	5.79
43	British Columbia Conference	10,154	75	56	67	83	281	10,270	2.77
44	Hawaii Conference	5,940	17	67	12	81	177	5,843	2.98
45	Kansas-Nebraska Conference	11,787	66	70	49	75	260	11,512	2.21
46	Kentucky-Tennessee Conference	12,489	126	106	101	72	405	12,790	3.24
47	Wisconsin Conference	6,773	31	89	38	68	226	6,751	3.34
48	Northern New England Conference	4,866	13	30	60	51	154	4,863	3.16
49	Montana Conference	3,854	23	3	10	49	85	3,883	2.21
50	Idaho Conference	6,303	34	39	38	43	154	6,323	2.44
51	Dakota Conference	4,246	10	19	9	42	80	4,261	1.88
52	Manitoba-Saskatchewan Conference	3,173	10	30	3	42	85	3,206	2.68
53	Mountain View Conference	2,279	18	42	40	34	134	2,346	5.88
54	Alaska Conference	3,678	12	9	27	27	75	3,688	2.04
55	New York Conference	4,936	16	16	62	20	114	4,950	2.31
56	Bermuda Conference	3,733	19	21	4	18	62	3,793	1.66
57	Maritime Conference	1,648	9	6	7	6	28	1,576	1.70
58	SDA Church in Newfoundland/Labrador	690	2	0	11	1	14	690	2.03
	TOTALS	1,006,317	6,765	9,140	9,005	11,784	36,694	1,024,035	3.65

ANNUAL NAD Membership Accessions Comparison 2005

Sorted by Descending Order in Column 7

TOTAL BAPTISMS AND PROFESSIONS OF FAITH

Report Date: REVISED September 14, 2006

All Columns are relative but this page is sorted by Column 7

	1	2	3	4	5	6	7	8	9
	Conference Name	Begin Members	1st Qtr	2nd Qtr	3rd Qtr	4th Qtr	Total Bapt&POF	Yr End Mem	Access/Mem %
1	Southeastern California Conference	64,526	564	516	465	522	2,067	65,691	3.20
2	Texas Conference	37,031	246	552	500	718	2,016	38,143	5.44
3	Florida Conference	55,577	504	413	526	464	1,907	55,938	3.43
4	Potomac Conference	28,630	220	548	335	578	1,681	29,647	5.87
5	Southern California Conference	44,232	188	359	450	548	1,545	43,716	3.49
6	Southeastern Conference	31,549	318	344	360	420	1,442	32,918	4.57
7	Greater New York Conference	22,184	233	317	373	512	1,435	23,145	6.47
8	Northeastern Conference	45,763	174	444	399	363	1,380	44,898	3.02
9	Georgia-Cumberland Conference	30,213	235	292	297	517	1,341	30,984	4.44
10	Central California Conference	31,511	261	220	196	540	1,217	31,992	3.86
11	Ontario Conference	24,489	345	180	240	342	1,107	25,559	4.52
12	Southwest Region Conference	20,252	75	137	405	296	913	21,178	4.51
13	Oregon Conference	32,778	145	320	159	276	900	33,479	2.75
14	South Atlantic Conference	33,891	275	113	163	345	896	34,671	2.64
15	Northern California Conference	40,060	200	229	208	252	889	40,244	2.22
16	Arizona Conference	14,501	89	239	331	189	848	15,129	5.85
17	Carolina Conference	16,726	176	213	244	180	813	17,424	4.86
18	Michigan Conference	24,849	114	235	164	287	800	25,116	3.22
19	Allegheny East Conference	30,606	179	204	195	212	790	31,210	2.58
20	So. New England Conference	13,343	137	151	148	341	777	13,839	5.82
21	Texico Conference	9,516	174	196	121	157	648	9,964	6.81
22	South Central Conference	31,681	106	184	192	122	604	32,187	1.91
23	Washington Conference	19,254	90	131	116	266	603	19,683	3.13
24	Gulf States Conference	8,659	39	121	232	200	592	9,075	6.84
25	New Jersey Conference	10,920	55	163	197	167	582	11,314	5.33
26	Upper Columbia Conference	23,737	112	199	104	160	575	24,019	2.42
27	Central States Conference	10,965	171	56	104	229	560	11,388	5.11
28	Lake Region Conference	27,541	113	105	100	191	509	28,041	1.85
29	Arkansas-Louisiana Conference	9,921	65	167	59	135	426	10,186	4.29

ANNUAL NAD Membership Accessions Comparison 2005

Sorted by Descending Order in Column 7

TOTAL BAPTISMS AND PROFESSIONS OF FAITH

Report Date: REVISED September 14, 2006

All Columns are relative but this page is sorted by Column 7

	1	2	3	4	5	6	7	8	9
	Conference Name	Begin Members	1st Qtr	2nd Qtr	3rd Qtr	4th Qtr	Total Bapt&POF	Yr End Mem	Access/Mem %
30	Rocky Mountain Conference	15,578	92	131	75	124	422	15,572	2.71
31	Pennsylvania Conference	9,860	63	69	109	166	407	10,028	4.13
32	Neveda-Utah Conference	7,008	78	53	190	85	406	7,160	5.79
33	Kentucky-Tennessee Conference	12,489	126	106	101	72	405	12,790	3.24
34	Illinois Conference	12,593	49	131	96	124	400	12,645	3.18
35	Chesapeake Conference	11,910	44	72	111	173	400	12,237	3.36
36	Ohio Conference	11,461	61	124	97	114	396	11,475	3.46
37	Oklahoma Conference	6,574	62	69	66	143	340	6,726	5.17
38	Alberta Conference	9,009	46	98	80	115	339	9,233	3.76
39	Minnesota Conference	6,592	27	121	74	111	333	6,832	5.05
40	Iowa-Missouri Conference	10,485	58	110	71	85	324	10,537	3.09
41	British Columbia Conference	10,154	75	56	67	83	281	10,270	2.77
42	Allegheny West Conference	12,290	26	106	39	109	280	12,198	2.28
43	Kansas-Nebraska Conference	11,787	66	70	49	75	260	11,512	2.21
44	Quebec Conference	4,634	54	38	40	96	228	4,897	4.92
45	Wisconsin Conference	6,773	31	89	38	68	226	6,751	3.34
46	Indiana Conference	6,869	21	67	36	98	222	6,972	3.23
47	Hawaii Conference	5,940	17	67	12	81	177	5,843	2.98
48	Idaho Conference	6,303	34	39	38	43	154	6,323	2.44
49	Northern New England Conference	4,866	13	30	60	51	154	4,863	3.16
50	Mountain View Conference	2,279	18	42	40	34	134	2,346	5.88
51	New York Conference	4,936	16	16	62	20	114	4,950	2.31
52	Montana Conference	3,854	23	3	10	49	85	3,883	2.21
53	Manitoba-Saskatchewan Conference	3,173	10	30	3	42	85	3,206	2.68
54	Dakota Conference	4,246	10	19	9	42	80	4,261	1.88
55	Alaska Conference	3,678	12	9	27	27	75	3,688	2.04
56	Bermuda Conference	3,733	19	21	4	18	62	3,793	1.66
57	Maritime Conference	1,648	9	6	7	6	28	1,576	1.70
58	SDA Church in Newfoundland/Labrador	690	2	0	11	1	14	690	2.03
	TOTALS	1,006,317	6,765	9,140	9,005	11,784	36,694	1,024,035	3.65

NAD Membership Accessions Comparison Year-end Membership 2005

Sorted by Descending Order by Column 8

Year-end Membership

Report Date:REVISED September 26, 2006

Membership at Close of 2005

	1	2	3	4	5	6	7	8	9
	Conference Name	Begin Members	1st Qtr	2nd Qtr	3rd Qtr	4th Qtr	Total Bapt&POF	Yr End Mem	Access/Mem %
1	Southeastern California Conference	64,526	564	516	465	522	2,067	65,691	3.20
2	Florida Conference	55,577	504	413	526	464	1,907	55,938	3.43
3	Northeastern Conference	45,763	174	444	399	363	1,380	44,898	3.02
4	Southern California Conference	44,232	188	359	450	548	1,545	43,716	3.49
5	Northern California Conference	40,060	200	229	208	252	889	40,244	2.22
6	Texas Conference	37,031	246	552	500	718	2,016	38,143	5.44
7	South Atlantic Conference	33,891	275	113	163	345	896	34,671	2.64
8	Oregon Conference	32,778	145	320	159	276	900	33,479	2.75
9	Southeastern Conference	31,549	318	344	360	420	1,442	32,918	4.57
10	South Central Conference	31,681	106	184	192	122	604	32,187	1.91
11	Central California Conference	31,511	261	220	196	540	1,217	31,992	3.86
12	Allegheny East Conference	30,606	179	204	195	212	790	31,210	2.58
13	Georgia-Cumberland Conference	30,213	235	292	297	517	1,341	30,984	4.44
14	Potomac Conference	28,630	220	548	335	578	1,681	29,647	5.87
15	Lake Region Conference	27,541	113	105	100	191	509	28,041	1.85
16	Ontario Conference	24,489	345	180	240	342	1,107	25,559	4.52
17	Michigan Conference	24,849	114	235	164	287	800	25,116	3.22
18	Upper Columbia Conference	23,737	112	199	104	160	575	24,019	2.42
19	Greater New York Conference	22,184	233	317	373	512	1,435	23,145	6.47
20	Southwest Region Conference	20,252	75	137	405	296	913	21,178	4.51
21	Washington Conference	19,254	90	131	116	266	603	19,683	3.13
22	Carolina Conference	16,726	176	213	244	180	813	17,424	4.86
23	Rocky Mountain Conference	15,578	92	131	75	124	422	15,572	2.71
24	Arizona Conference	14,501	89	239	331	189	848	15,129	5.85
25	Southern New England Conference	13,343	137	151	148	341	777	13,839	5.82
26	Kentucky-Tennessee Conference	12,489	126	106	101	72	405	12,790	3.24
27	Illinois Conference	12,593	49	131	96	124	400	12,645	3.18
28	Chesapeake Conference	11,910	44	72	111	173	400	12,237	3.36
29	Allegheny West Conference	12,290	26	106	39	109	280	12,198	2.28
30	Kansas-Nebraska Conference	11,787	66	70	49	75	260	11,512	2.21

NAD Membership Accessions Comparison Year-end Membership 2005

Sorted by Descending Order by Column 8
Year-end Membership

Report Date:REVISED September 26, 2006

Membership at Close of 2005

	1	2	3	4	5	6	7	8	9
	Conference Name	Begin Members	1st Qtr	2nd Qtr	3rd Qtr	4th Qtr	Total Bapt&POF	Yr End Mem	Access/Mem %
31	Ohio Conference	11,461	61	124	97	114	396	11,475	3.46
32	Central States Conference	10,965	171	56	104	229	560	11,388	5.11
33	New Jersey Conference	10,920	55	163	197	167	582	11,314	5.33
34	Iowa-Missouri Conference	10,485	58	110	71	85	324	10,537	3.09
35	British Columbia Conference	10,154	75	56	67	83	281	10,270	2.77
36	Arkansas-Louisiana Conference	9,921	65	167	59	135	426	10,186	4.29
37	Pennsylvania Conference	9,860	63	69	109	166	407	10,028	4.13
38	Texico Conference	9,516	174	196	121	157	648	9,964	6.81
39	Alberta Conference	9,009	46	98	80	115	339	9,233	3.76
40	Gulf States Conference	8,659	39	121	232	200	592	9,075	6.84
41	Nevada-Utah Conference	7,008	78	53	190	85	406	7,160	5.79
42	Indiana Conference	6,869	21	67	36	98	222	6,972	3.23
43	Minnesota Conference	6,592	27	121	74	111	333	6,832	5.05
44	Wisconsin Conference	6,773	31	89	38	68	226	6,751	3.34
45	Oklahoma Conference	6,574	62	69	66	143	340	6,726	5.17
46	Idaho Conference	6,303	34	39	38	43	154	6,323	2.44
47	Hawaii Conference	5,940	17	67	12	81	177	5,843	2.98
48	New York Conference	4,936	16	16	62	20	114	4,950	2.31
49	Quebec Conference	4,634	54	38	40	96	228	4,897	4.92
50	Northern New England Conference	4,866	13	30	60	51	154	4,863	3.16
51	Dakota Conference	4,246	10	19	9	42	80	4,261	1.88
52	Montana Conference	3,854	23	3	10	49	85	3,883	2.21
53	Bermuda Conference	3,733	19	21	4	18	62	3,793	1.66
54	Alaska Conference	3,678	12	9	27	27	75	3,688	2.04
55	Manitoba-Saskatchewan Conference	3,173	10	30	3	42	85	3,206	2.68
56	Mountain View Conference	2,279	18	42	40	34	134	2,346	5.88
57	Maritime Conference	1,648	9	6	7	6	28	1,576	1.70
58	SDA Church in Newfoundland/Labrador	690	2	0	11	1	14	690	2.03
	TOTALS	1,006,317	6,765	9,140	9,005	11,784	36,694	1,024,035	3.65

NAD Membership Comparison 2005

Sorted by Column 9 - Percent Accessions Per Member for 2005

Accessions Include Baptisms and Professions of Faith

Report Date: REVISED September 26, 2006

	1	2	3	4	5	6	7	8	9
	Conference Name	Begin Members	1st Qtr	2nd Qtr	3rd Qtr	4th Qtr	Total Bapt&POF	END Members	Access/Mem %
1	Gulf States Conference	8,659	39	121	232	200	592	9,075	6.84
2	Texico Conference	9,516	174	196	121	157	648	9,964	6.81
3	Greater New York Conference	22,184	233	317	373	512	1,435	23,145	6.47
4	Mountain View Conference	2,279	18	42	40	34	134	2,346	5.88
5	Potomac Conference	28,630	220	548	335	578	1,681	29,647	5.87
6	Arizona Conference	14,501	89	239	331	189	848	15,129	5.85
7	Southern New England Conference	13,343	137	151	148	341	777	13,839	5.82
8	Nevada-Utah Conference	7,008	78	53	190	85	406	7,160	5.79
9	Texas Conference	37,031	246	552	500	718	2,016	38,143	5.44
10	New Jersey Conference	10,920	55	163	197	167	582	11,314	5.33
11	Oklahoma Conference	6,574	62	69	66	143	340	6,726	5.17
12	Central States Conference	10,965	171	56	104	229	560	11,388	5.11
13	Minnesota Conference	6,592	27	121	74	111	333	6,832	5.05
14	Quebec Conference	4,634	54	38	40	96	228	4,897	4.92
15	Carolina Conference	16,726	176	213	244	180	813	17,424	4.86
16	Southeastern Conference	31,549	318	344	360	420	1,442	32,918	4.57
17	Ontario Conference	24,489	345	180	240	342	1,107	25,559	4.52
18	Southwest Region Conference	20,252	75	137	405	296	913	21,178	4.51
19	Georgia-Cumberland Conference	30,213	235	292	297	517	1,341	30,984	4.44
20	Arkansas-Louisiana Conference	9,921	65	167	59	135	426	10,186	4.29
21	Pennsylvania Conference	9,860	63	69	109	166	407	10,028	4.13
22	Central California Conference	31,511	261	220	196	540	1,217	31,992	3.86
23	Alberta Conference	9,009	46	98	80	115	339	9,233	3.76
24	Southern California Conference	44,232	188	359	450	548	1,545	43,716	3.49
25	Ohio Conference	11,461	61	124	97	114	396	11,475	3.46
26	Florida Conference	55,577	504	413	526	464	1,907	55,938	3.43
27	Chesapeake Conference	11,910	44	72	111	173	400	12,237	3.36
28	Wisconsin Conference	6,773	31	89	38	68	226	6,751	3.34
29	Kentucky-Tennessee Conference	12,489	126	106	101	72	405	12,790	3.24

NAD Membership Comparison 2005

Sorted by Column 9 - Percent Accessions Per Member for 2005

Accessions Include Baptisms and Professions of Faith

Report Date: REVISED September 26, 2006

	1	2	3	4	5	6	7	8	9
	Conference Name	Begin Members	1st Qtr	2nd Qtr	3rd Qtr	4th Qtr	Total Bapt&POF	END Members	Access/Mem %
30	Indiana Conference	6,869	21	67	36	98	222	6,972	3.23
31	Michigan Conference	24,849	114	235	164	287	800	25,116	3.22
32	Southeastern California Conference	64,526	564	516	465	522	2,067	65,691	3.20
33	Illinois Conference	12,593	49	131	96	124	400	12,645	3.18
34	Northern New England Conference	4,866	13	30	60	51	154	4,863	3.16
35	Washington Conference	19,254	90	131	116	266	603	19,683	3.13
36	Iowa-Missouri Conference	10,485	58	110	71	85	324	10,537	3.09
37	Northeastern Conference	45,763	174	444	399	363	1,380	44,898	3.02
38	Hawaii Conference	5,940	17	67	12	81	177	5,843	2.98
39	British Columbia Conference	10,154	75	56	67	83	281	10,270	2.77
40	Oregon Conference	32,778	145	320	159	276	900	33,479	2.75
41	Rocky Mountain Conference	15,578	92	131	75	124	422	15,572	2.71
42	Manitoba-Saskatchewan Conference	3,173	10	30	3	42	85	3,206	2.68
43	South Atlantic Conference	33,891	275	113	163	345	896	34,671	2.64
44	Allegheny East Conference	30,606	179	204	195	212	790	31,210	2.58
45	Idaho Conference	6,303	34	39	38	43	154	6,323	2.44
46	Upper Columbia Conference	23,737	112	199	104	160	575	24,019	2.42
47	New York Conference	4,936	16	16	62	20	114	4,950	2.31
48	Allegheny West Conference	12,290	26	106	39	109	280	12,198	2.28
49	Northern California Conference	40,060	200	229	208	252	889	40,244	2.22
50	Kansas-Nebraska Conference	11,787	66	70	49	75	260	11,512	2.21
51	Montana Conference	3,854	23	3	10	49	85	3,883	2.21
52	Alaska Conference	3,678	12	9	27	27	75	3,688	2.04
53	SDA Church in Newfoundland/Labrador	690	2	0	11	1	14	690	2.03
54	South Central Conference	31,681	106	184	192	122	604	32,187	1.91
55	Dakota Conference	4,246	10	19	9	42	80	4,261	1.88
56	Lake Region Conference	27,541	113	105	100	191	509	28,041	1.85
57	Maritime Conference	1,648	9	6	7	6	28	1,576	1.70
58	Bermuda Conference	3,733	19	21	4	18	62	3,793	1.66
	TOTALS	1,006,317	6,765	9,140	9,005	11,784	36,694	1,024,035	3.65

NAD Membership NET PERCENT GROWTH 2005

Sorted Col 10 by Descending Order

This amount takes into account Adjustments, Letters of Transfer In/Out, Deaths, Missing, and Removed.

	1	2	3	4	5	6	7	8	9	10
	Conference Name	Begin Mem	1st Qtr	2nd Qtr	3rd Qtr	4th Qtr	Total Accessions	Yr End Mem	Access/Mem %	Net % Growth
1	Quebec Conference	4,634	54	38	40	96	228	4,897	4.92	5.68%
2	Gulf States Conference	8,659	39	121	232	200	592	9,075	6.84	4.80%
3	Texico Conference	9,516	174	196	121	157	648	9,964	6.81	4.71%
4	Southwest Region Conference	20,252	75	137	405	296	913	21,178	4.51	4.57%
5	Ontario Conference	24,489	345	180	240	342	1,107	25,559	4.52	4.37%
6	Southeastern Conference	31,549	318	344	360	420	1,442	32,918	4.57	4.34%
7	Greater New York Conference	22,184	233	317	373	512	1,435	23,145	6.47	4.33%
8	Arizona Conference	14,501	89	239	331	189	848	15,129	5.85	4.33%
9	Carolina Conference	16,726	176	213	244	180	813	17,424	4.86	4.17%
10	Central States Conference	10,965	171	56	104	229	560	11,388	5.11	3.86%
11	Southern New England Conference	13,343	137	151	148	341	777	13,839	5.82	3.72%
12	Minnesota Conference	6,592	27	121	74	111	333	6,832	5.05	3.64%
13	New Jersey Conference	10,920	55	163	197	167	582	11,314	5.33	3.61%
14	Potomac Conference	28,630	220	548	335	578	1,681	29,647	5.87	3.55%
15	Texas Conference	37,031	246	552	500	718	2,016	38,143	5.44	3.00%
16	Mountain View Conference	2,279	18	42	40	34	134	2,346	5.88	2.94%
17	Chesapeake Conference	11,910	44	72	111	173	400	12,237	3.36	2.75%
18	Arkansas-Louisiana Conference	9,921	65	167	59	135	426	10,186	4.29	2.67%
19	Georgia-Cumberland Conference	30,213	235	292	297	517	1,341	30,984	4.44	2.55%
20	Alberta Conference	9,009	46	98	80	115	339	9,233	3.76	2.49%
21	Kentucky-Tennessee Conference	12,489	126	106	101	72	405	12,790	3.24	2.41%
22	Oklahoma Conference	6,574	62	69	66	143	340	6,726	5.17	2.31%
23	South Atlantic Conference	33,891	275	113	163	345	896	34,671	2.64	2.30%
24	Washington Conference	19,254	90	131	116	266	603	19,683	3.13	2.23%
25	Nevada-Utah Conference	7,008	78	53	190	85	406	7,160	5.79	2.17%
26	Oregon Conference	32,778	145	320	159	276	900	33,479	2.75	2.14%
27	Allegheny East Conference	30,606	179	204	195	212	790	31,210	2.58	1.97%
28	Lake Region Conference	27,541	113	105	100	191	509	28,041	1.85	1.82%
29	Southeastern California Conference	64,526	564	516	465	522	2,067	65,691	3.20	1.81%
30	Pennsylvania Conference	9,860	63	69	109	166	407	10,028	4.13	1.70%

NAD Membership NET PERCENT GROWTH 2005

Sorted Col 10 by Descending Order

This amount takes into account Adjustments, Letters of Transfer In/Out, Deaths, Missing, and Removed.

	1	2	3	4	5	6	7	8	9	10
	Conference Name	Begin Mem	1st Qtr	2nd Qtr	3rd Qtr	4th Qtr	Total Accessions	Yr End Mem	Access/Mem %	Net % Growth
31	Bermuda Conference	3,733	19	21	4	18	62	3,793	1.66	1.61%
32	South Central Conference	31,681	106	184	192	122	604	32,187	1.91	1.60%
33	Central California Conference	31,511	261	220	196	540	1,217	31,992	3.86	1.53%
34	Indiana Conference	6,869	21	67	36	98	222	6,972	3.23	1.50%
35	Upper Columbia Conference	23,737	112	199	104	160	575	24,019	2.42	1.19%
36	British Columbia Conference	10,154	75	56	67	83	281	10,270	2.77	1.14%
37	Michigan Conference	24,849	114	235	164	287	800	25,116	3.22	1.07%
38	Manitoba-Saskatchewan Conferenc	3,173	10	30	3	42	85	3,206	2.68	1.04%
39	Montana Conference	3,854	23	3	10	49	85	3,883	2.21	0.75%
40	Florida Conference	55,577	504	413	526	464	1,907	55,938	3.43	0.65%
41	Iowa-Missouri Conference	10,485	58	110	71	85	324	10,537	3.09	0.50%
42	Northern California Conference	40,060	200	229	208	252	889	40,244	2.22	0.46%
43	Illinois Conference	12,593	49	131	96	124	400	12,645	3.18	0.41%
44	Dakota Conference	4,246	10	19	9	42	80	4,261	1.88	0.35%
45	Idaho Conference	6,303	34	39	38	43	154	6,323	2.44	0.32%
46	New York Conference	4,936	16	16	62	20	114	4,950	2.31	0.28%
47	Alaska Conference	3,678	12	9	27	27	75	3,688	2.04	0.27%
48	Ohio Conference	11,461	61	124	97	114	396	11,475	3.46	0.12%
49	SDA Church in Newfoundland/Labrad	690	2	0	11	1	14	690	2.03	0.00%
50	Rocky Mountain Conference	15,578	92	131	75	124	422	15,572	2.71	-0.04%
51	Northern New England Conference	4,866	13	30	60	51	154	4,863	3.16	-0.06%
52	Wisconsin Conference	6,773	31	89	38	68	226	6,751	3.34	-0.32%
53	Allegheny West Conference	12,290	26	106	39	109	280	12,198	2.28	-0.75%
54	Southern California Conference	44,232	188	359	450	548	1,545	43,716	3.49	-1.17%
55	Hawaii Conference	5,940	17	67	12	81	177	5,843	2.98	-1.63%
56	Northeastern Conference	45,763	174	444	399	363	1,380	44,898	3.02	-1.89%
57	Kansas-Nebraska Conference	11,787	66	70	49	75	260	11,512	2.21	-2.33%
58	Maritime Conference	1,648	9	6	7	6	28	1,576	1.70	-4.37%
	TOTALS	1,006,317	6,765	9,140	9,005	11,784	36,694	1,024,035	3.65	1.76%

